



WinIG Attr User Manual

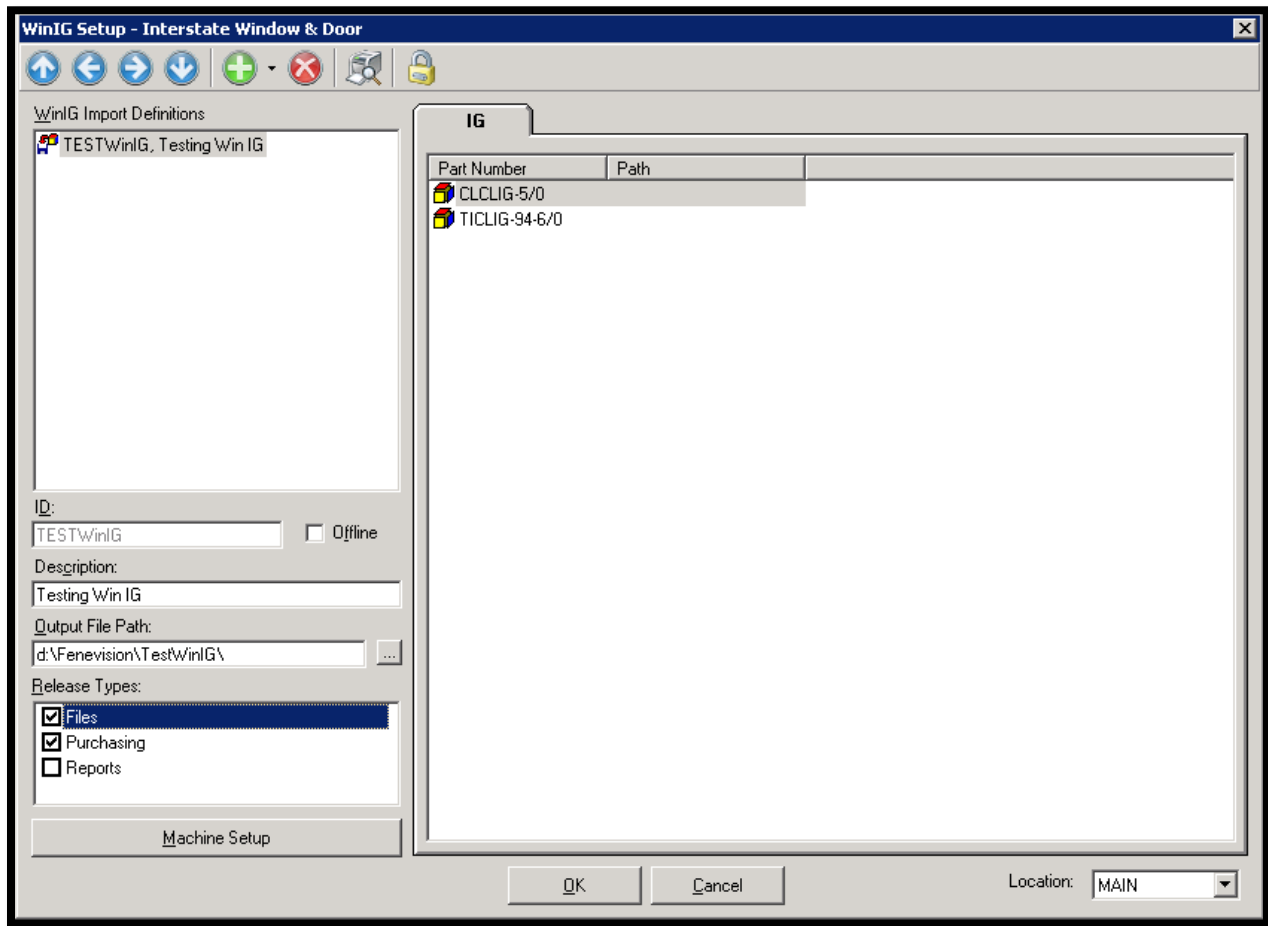
Introduction

This document describes the best practices for implementing and maintaining the WinIG Attr interface.

The legacy WinIG interface depends on a particular bill of material (BOM) structure. All glass, spacer, muntin and gas parts needed to be in the same subassembly. To remedy this, the WinIG Attr interface is based on attributes, which allows for any BOM configuration. In the WinIG Attr interface, only the IG parts themselves are assigned in the WinIG Attr interface setup screen. Attributes are then used to find the other parts in the BOM structure.

WinIG Attr Setup Screen

To access the WinIG Attr Setup screen in CORE, select Setup -> Interfaces -> GED WinIG Attr. Setup is like the legacy WinIG interface, except only IG parts are assigned to the interface.





FeneVision® Machine Interface User Manual

Note: Add parts onto the interface without path. Path has no meaning for the WinIG Attr interface. Inclusion in the interface can be controlled via attribute.

Release Types

- Files – when checked the WinIG file can be generated from Release Interfaces.
- Purchasing – when checked the WinIG file can be generated from Order (purchasing) Requirements.
 - The part assigned to the machine definition must be marked purchased when generating from purchasing requirements.

Machine Setup Screen

This screen appears when you select the Machine Setup button in the WinIG Attr Setup screen.

Make sure the Sequence Attribute field is assigned. This is required for multi-sash windows so that grids, gas, spacer, etc. can be matched with the corresponding IG.

The WinIG Machine Setup dialog adds five new Part Attribute definitions. These part types are disabled in the legacy interface. The “Lite Number” attributes are not required unless rejecting individual lites of glass and ordering those from the vendor.

- Type – This attribute would return the ‘type’ of the part. Release this attribute in Setup -> Attributes!
 - 0 – IG
 - 1 – Spacer



FeneVision® Machine Interface User Manual

- 2 – Gas
- 3 – Muntin
- 4 – Special 1
- 5 – Special 2
- 6 – Special 3
- Unit Number – This attribute will return the WinIG part number information for each part, and its value is placed in the WinIG file. For gas, this attribute can return ARGON. For muntins, this attribute can return the grid color. It must be assigned to spacer, gas, muntin, and special1/2/3 parts. Release this attribute in Setup -> Attributes!
- Inner Lite Number – Only required for IG type parts and only when rejecting per lite.
- Center Lite Number – Only required for IG type parts and only when rejecting per lite.
- Outer Lite Number – Only required for IG type parts and only when rejecting per lite.

Always Include Shapes

A new option was added to the setup screen to “Always Include Shape Parameters”. Previously only the fields for shape parameters that were used in the current unit were included in the file. With this setting enabled, the file will include blank spaces for all shape parameters regardless of the number of parameters that are used.

This functionality is available in both the new interface as well as the legacy interface.

If a shape has parameters A and B with A=20, B=15, the end of a unit line in the WinIG file would look like the following:

```
... 20, 15
```

With the new setting, the file will include blank spaces for each parameter (A through G) that is not used. In this case, the above example file will have a line ending in:

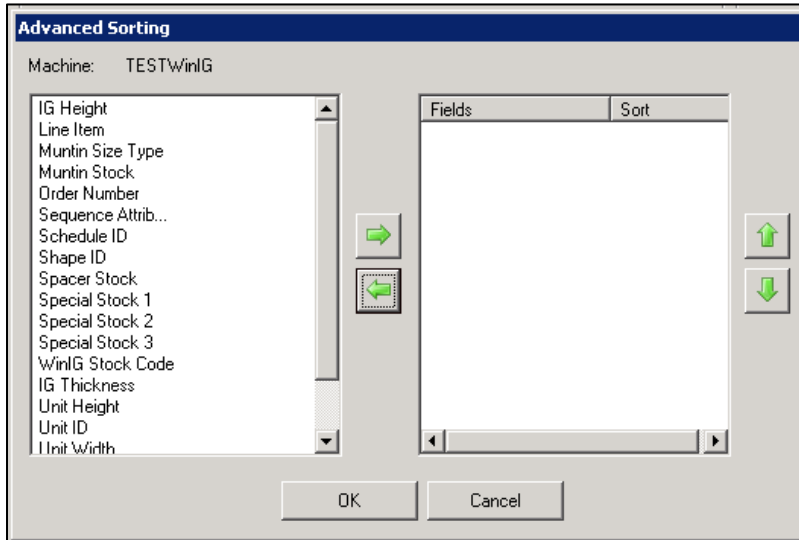
```
... 20, 15, , , , ,
```

File/Report Release

Releasing interface files and reports behaves the same as the legacy WinIG interface. All the settings and functionality included in the legacy interface (advanced sorting, line item comment tags, etc.) will work with the new interface.



FeneVision® Machine Interface User Manual



Item Comment

The item comment can be left blank to return the default information or be customized using the following list of tags.

For example, if the Item Comment is “<SchedID> - <BatchID>” and an interface file for schedule 3, batch 4 is released, the comment for that item will be “3 - 4”.

Available Tags (warning this might not be a complete list):

!SCHEDID!

!BATCHID!

!UNITID!

!BIN!

!ORDERNUMBER!

!LINEITEM!

!SUBLINEITEM!

!LINEITEMFORMAT! – A formatted version of the line item & sub line item

!PARENTPART! – Returns the name of the IG’s parent part

!CODE! – Status of unit being exported

!REJECTCODEVALUE!

!ATTRVAL=X! – Replaces the tag with the value of Attribute X if it exists.

!ATTRNAME=Y! - Replaces the tag with the name of Attribute Y if it exists.

Some tags do not make sense when used through purchasing or when the machine is set to combine line items. The table below illustrates when tags are valid. If a comment string contains a tag that is not valid the tag will be replaced with no value.

Tag	Production	Prod w/Combine	Purchasing	Purch w/Combine
SchedID	X	X		
BatchID	X	X		
UnitID	X			



FeneVision® Machine Interface User Manual

Bin	X			
OrderNumber	X		X	
LineItem	X		X	
SubLineItem	X		X	
LineItemFormat	X		X	
ParentPart	X	X	X	X
Code	X	X		
RejectOptionValue	X	X	X	X
AttrName=	X	X	X	X
AttrVal=	X	X	X	X

File Comment

The file comment can be used to add additional information to the file's order header, which in turn can be used for imports or to provide scheduling information.

Available Tags

!SchedID!

!SchedDesc!

!BatchID! (Blank if merging files)

!BatchDesc! (Blank if merging files)

Any text entered in the File Comment field replaces the standard "WinIG Import File" text. This functionality is available for production schedules only. It is not available for remakes or purchasing exports.

Part Configuration

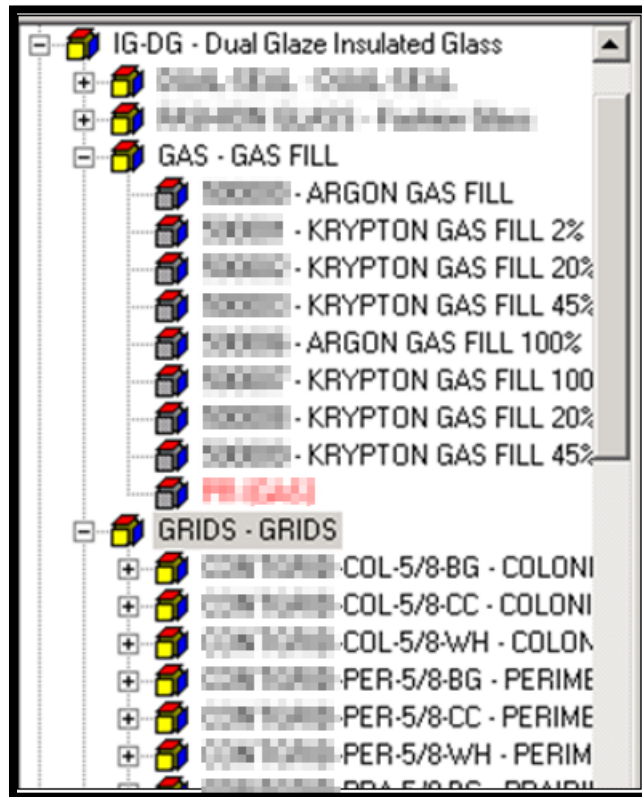
In the below image, the "IG-DG" part would be assigned to the machine definition in the WinIG interface.

A 'Type' attribute would then be added to each sub assembly that should be included in the WinIG file. If this type returns nothing (i.e., -1), that part will not be included in the file. This can be used in lieu of the path functionality.

In the example below, a Type attribute would be added to each of the parts under the "GAS" part to return a value of 2, since they are all gas parts that need to be included in the interface. Type 3 would be assigned to all the parts under the "GRIDS" part since these are muntin parts.

A unit 'Number' attribute would be added to the "IG-DG" part as well as any part that was assigned a 'Type' attribute. This attribute would return the WinIG number associated with the given part. Notice the muntin parts beginning with CONTGRID also contain a code for color. If for some reason the muntin parts did not contain the color code, the unit 'Number' attribute could append the color code so that color is represented in the file.

If planning to use the WinIG Reject functionality, the Inner/Center/Outer lite attributes should be assigned to the "IG-DG" part.



In the scenario where there is a single part to represent all grids or gas, the 'Number' attribute become important. Instead of simply returning the parts number, the attribute should return text that the vendor will recognize and be able to import that includes all pertinent information.

Additional Attributes

The above focuses on the 'Number' and 'Type' attributes, but there are other attributes that are required to make sure the interface works as expected. This section will focus on those attributes.

- Muntin Pattern – Often named MP, this contains the muntin pattern, like 2VX3H. This attribute is selected in Setup -> System -> Attributes.
- Sequence – Often named SEQ, this is required on all parts associated with the WinIG file (IG, Spacer, Gas, etc.). In a double hung window, all these parts associated with top sash must have same SEQ value, while all these parts associated with bottom sash must have a different SEQ value. This attribute is selected in the [Machine Setup Screen](#).
- Shape ID – Often named SHAPE, this contains the shape code required in the WinIG file.
- Shape Dimensions – Often named WIG-SHP-A, WIG-SHP-b, etc. These contain required dimensions for the shape. Shape parameters are assigned in the [Machine Setup Screen](#).

Note: All attributes need to be released to production via Setup -> System -> Attributes.



FeneVision® Machine Interface User Manual

Muntin Notch Locations

The purpose of this section is to illustrate the setup necessary to pull notch locations out of the database and then place it into N-V and N-H attributes, which are then used by the WinIG interface.

How WinIG Notch Locations are Calculated

1. The Display Object determines the location that a grid bar touches edge of the visible glass
 - a. This value is written to the OrderDetailCustom table
2. In the BOM on the IG sub-assembly part in the Notch attribute the value is pulled one by one from the OrderDetailCustom table, modified by the formula below and then written to the individual notch attributes (N-H1 through N-H20 and N-V1 through N-V20).
 - a. $\text{Notch Value} = (\text{Custom Value from the database} + ((\text{TuckBack} + \text{Width Adjust}) / 2))$
 - i. This result is rounded to 4 decimal places
 - ii. The tuck back and width adjust is direction specific.
 1. Horizontal uses HTUCK and GWA
 2. Vertical uses VTUCK and GHA
 - b. Note that the OrderDetailCustom table is only populated by Order entry, so these values cannot be verified during a part breakdown. I will provide details below on how to verify changes to the values.

Example of Notch Calculation

Using a 30x60 Master PW, REP, FINISH, Flat Colonial 2Vx2HC as an example:

- The Display Object Calculates the punch location to write to the OrderDetailCustom table:
- $\text{IGVW} = [\text{Ordered Width} - \text{IG Cutback} - \text{Horizontal Tuck} - (\text{Width Adjust Parameter} / 2)] / \text{Number of Panes in Grid Pattern}$
- $= [30 - 4.3125 - 2.1215 - (2.1215 / 2)] / 3 = 7.5018$

Note: The 'Width Adjust' parameter is a combination of the tuck value and the width adjustment value

This value can be verified through the Display Object Setup screen. On the test tab select the unit, size and options that you wish to verify. Right click on top of the Displayed image and choose Grid Locations. You can use this screen to confirm the Display Object punch location configuration

This value is then pulled into the BOM by the notch attribute and half of the tuck back and WA are added back into to provide the correct value for WinIG.

$$\text{Notch Location} = 7.5018 + ((2.1215 + 0) / 2) = 8.56255$$

In Display Object Setup your tya, bya, lxa and rxa parameter have to equal the IG cutback plus the tuckback result divided by 2. If the cutback of a sash or IG is required, the values must be change on the Master units, the series specific units, the replacement parts, and the DO parameters. If all of these areas are not updated the system will not provide the correct manufactured sizes and punch locations. The wa (gwa) and ha (gha) values are configured and verified to match the tuck back and width or height adjustments so these values should not need to be changed at any point as long as the tuck values and adjustment values in the BOM are not changed.



FeneVision® Machine Interface User Manual

Always Store Grid Notch Locations

Set the following GSP to true to always store the grid notch locations in the [OrderDetailCustom] table.

OptionWizardSaveGridLocations	Boolean value identifying if grid notching locations should be saved for all line items, regardless if they have been aligned to another window using Opening Designer. This setting applies to the base option wizard as well as windows ordered using Opening Designer and Bay/Bow Designer.
-------------------------------	--

Script Syntax for Notch Data Attributes

Example script is below. Please note that the param name being worked with could be ksig, lsig, or just ig. Plan accordingly.

Attribute Script:

```
Attributes("N-H1").value = ""
Attributes("N-H2").value = ""
Attributes("N-H3").value = ""
Attributes("N-H4").value = ""
Attributes("N-H5").value = ""
Attributes("N-H6").value = ""
Attributes("N-H7").value = ""
Attributes("N-H8").value = ""
Attributes("N-H9").value = ""
Attributes("N-H10").value = ""
Attributes("N-H11").value = ""
Attributes("N-H12").value = ""
Attributes("N-H13").value = ""
Attributes("N-H14").value = ""
Attributes("N-H15").value = ""
Attributes("N-H16").value = ""
Attributes("N-H17").value = ""
Attributes("N-H18").value = ""
Attributes("N-H19").value = ""
Attributes("N-H20").value = ""
Attributes("N-V1").value = ""
Attributes("N-V2").value = ""
Attributes("N-V3").value = ""
Attributes("N-V4").value = ""
Attributes("N-V5").value = ""
Attributes("N-V6").value = ""
Attributes("N-V7").value = ""
Attributes("N-V8").value = ""
Attributes("N-V9").value = ""
Attributes("N-V10").value = ""
Attributes("N-V11").value = ""
```



FeneVision® Machine Interface User Manual

```
Attributes("N-V12").value = ""  
Attributes("N-V13").value = ""  
Attributes("N-V14").value = ""  
Attributes("N-V15").value = ""  
Attributes("N-V16").value = ""  
Attributes("N-V17").value = ""  
Attributes("N-V18").value = ""  
Attributes("N-V19").value = ""  
Attributes("N-V20").value = ""
```

'Checks to see if ordered item is sublineitem

```
If Right(CurrentPart.Parent.PartNo, 2) = "KS" Or Right(CurrentPart.Parent.PartNo, 2) = "LS" Then  
    ParamName = LCase(Right(CurrentPart.Parent.PartNo, 2)) & "ig_"  
Else  
    ParamName = "ig_"  
End If
```

```
HCount = Val(CustomValue(ParamName & "hcount"))  
VCount = Val(CustomValue(ParamName & "vcount"))
```

```
If HCount = 0 And VCount = 0 Then  
    Exit Function  
End If
```

'Sets MP attribute value to custom if Opening designer is used

```
If CustomExists(ParamName & "hcount") Or CustomExists(ParamName & "vcount") Then  
    Attributes("MP").value = "CUSTOM"  
End If
```

***To pull vertical punch locations out of OrderDetailCustom

```
For I = 1 To VCount  
    Tempvar = CustomValue(ParamName & "v" & I)  
    Attributes("N-V" & I).value = Tempvar  
Next I
```

***To pull vertical punch locations out of OrderDetailCustom

```
For I = 1 To HCount  
    Tempvar = CustomValue(ParamName & "h" & I)  
    Attributes("N-H" & I).value = Tempvar  
Next I
```

```
retval = ""
```



FeneVision® Machine Interface User Manual

WinIG Interface Setup

To get notch values to show within the WinIG file, the Horizontal and Vertical prefix for the notch value attributes must be specified in the WinIG Machine Setup screen:

The screenshot shows the 'WinIG Machine Setup' dialog box. The 'Machine' is set to 'TestID'. The 'Muntin' section is highlighted with a red box, showing 'Horizontal Prefix' set to 'NCHH' and 'Vertical Prefix' set to 'NCHV'. Other sections include 'General' (Sequence Attribute, Alert Option Code, Reject Option Code, Show Reject Code in Remake Comment, Merge Output Files, Disable Order Information Dialog, Combine Line Items, Generate Files By Work Routes, File Comment), 'Shape Information' (Shape ID, Mirror Image, Rounded Corners, Corner Radius, Dimension A-G, Always Include Shape Parameters), 'Reject Information' (Inner Lite Reject Types, Center Lite Reject Types, Outer Lite Reject Types), 'Spacer Information' (Spacer Undercut, Holes), 'Report' (Cost Decimal Places: 2), 'Item Comment' (Item Comment, Item Comment Length: 40), and 'Part Attributes' (Type Attribute, Unit Number Attribute, Inner Lite Number Attribute, Center Lite Number Attribute, Outer Lite Number Attribute). Buttons for 'OK' and 'Cancel' are at the bottom.

In the example above, NCH-H and NCH-V were used. Once these attribute prefixes are specified in the interface, they should be automatically pulled into the WinIG file when there are Muntins for the IG.

PO Export

This section will outline the steps required to generate a WinIG file from PO Entry via a PO export script. Some of the configuration mentioned may require more explanation or testing. This configuration, like most other configuration changes, should be done first on a test server and tested accordingly.

After this is implemented, WinIG interface files should be created from PO Entry only. There are many ways to generate WinIG files and this is one way to do so. Be aware of the current configuration and processes and how this will change those processes for day to day users to ensure the switch makes sense.

Configuration

A traditional WinIG implementation might have the ordered-out glass parts as inventoried items (not purchased). This means the system will not generate a PO, but only a WinIG file via a production schedule. Lastly, the PO



FeneVision® Machine Interface User Manual

Invoice is entered directly into the accounting system, skipping the FeneTech software entirely after the WinIG file generation.

In order to generate a WinIG file from a PO, the ordered-out glass parts should be marked as purchased to generate purchasing requirements that will be placed on a PO. If the glass parts are not currently purchased, this is a large change and needs to be tested heavily by all of those involved with this process change.

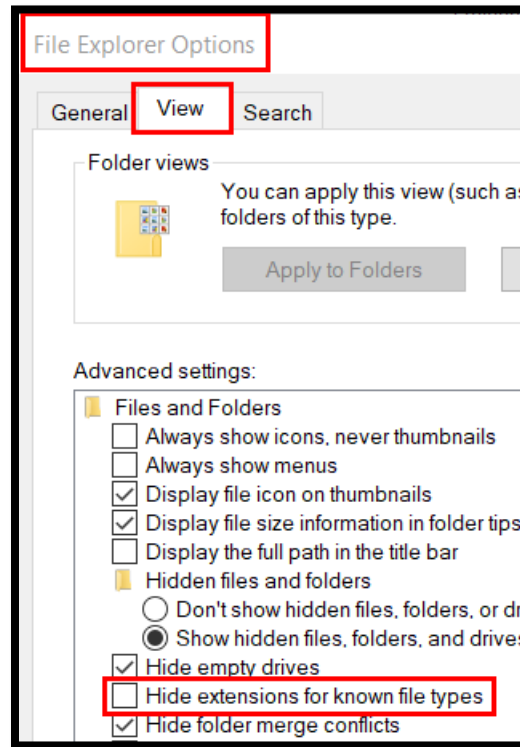
PO Export Script


Once the configuration is in place, you can follow these steps to define and configure the PO Export script for the WinIG file.

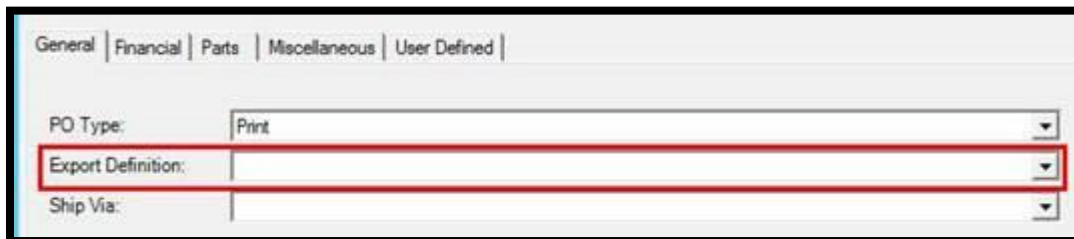
1. This document should be accompanied by an associated file named "[WinIG-POExport.vb](#)". Locate this file and save it to an accessible location.
 - a. Contact FeneTech for a copy of this file if it was not provided originally.
2. Open the file in a text editor and change the following fields to match your system:
 - a. <WinIG Interface Name> – Replace this with the name of the interface in CORE
 - i. Setup tab > Interface > ?
 1. Typical names might be: "GED WinIG", "WinIG", "WinIG ATTR"
 - b. <WinIG MachineID> – Replace this with the MachineID from the WinIG Setup screen

```
25 Public Overrides Function ExportPO(ByVal POData As DataSet, ByVal outputPath As String) As FeneVision.ImportExport.Result
26     System.Threading.Thread.Sleep(5000)
27
28     Return ExportPOThroughInterface(POData, outputPath, "<WinIG-Interface-Name>", "<WinIG-MachineID>")
29 End Function
30
31 End Class
```

3. Save the file
4. Change the extension of the file from ".txt" to ".vb"
 - a. If given a warning, accept it
 - b. If ".txt" is not included in the file name, known extensions are being hidden
 - i. Search for "Folder Options" or "File Explorer Options" depending on your OS
 - ii. Select the "View" tab
 - iii. Uncheck the "Hide extensions for known file types" checkbox
 - iv. Click Apply
 1. This can be reverted after changing the file extension. Leave this window open if it will be reverted. Check the box and click apply again.



5. Create the PO Export definition in Setup > Import/Export > Export > PO
 - a. Set the definition to Online
 - b. Set the Directory to the output file path already configured in the WinIG Setup screen
 - c. Leave Group By set to {None}
6. Apply the “WinIG-POExport.vb” file by clicking the add script button () and selecting the file
7. Click the applies to button and select the vendors this export will apply to
8. Close Import/Export Setup
9. Open Vendor Setup and select the PO Export definition for the vendors
 - a. It is required to both apply the definition to the vendor and choose the definition in vendor setup



Typical Process

The typical process with this configuration is as follows:

1. Orders are entered into the system
2. Those orders generate purchasing requirements for glass configured to go through WinIG



FeneVision® Machine Interface User Manual

3. Purchase Orders are generated via Order Requirements
4. The PO is approved and released to the vendor
5. The “Export” button because available in PO Entry
6. User click the “Export” button to generate the file in the directory specified
7. File is sent to the vendor via:
 - a. Manual email
 - b. Vendor FTP (ideal, no user action required)
8. Items can be scheduled at any time for production
 - a. With legacy production report configuration, pre-scheduling was required to generate the WinIG file
9. (Optional, not described in this document) Receipt Import from a vendor EDI file
 - a. Otherwise, manual receipt entry
10. PO Invoicing

Testing

Thorough testing of all processes is required. Including up to and through accounting.

File Format

The interface file is standard GED format, and so the layout (list/order of fields) cannot be modified.

Appendix A of the legacy “WinIG Configuration Guide.doc” mentioned above in the [Supporting Documentation](#) section describes the file format in detail and has sample output files.

This document includes information about the Line Item Record in the file, and how it relates to the BOM.

Each IG will have a separate record in the file.

Field	Data Type	Field Name	Description
0	Numeric (required)	Item Number	This is the line item number in the order, starting at 1.
1	Numeric (required)	Quantity Ordered	The number of units to make. Upon import the program will explode the unit into the defaulted lites or pieces of glass, the glass types, and the special processes.
2	Numeric	Quantity Made	This represents the number of units already made. The number of units that WILL be made is the (Quantity Ordered - Quantity Made). The default is zero.
3	String(10) (required)	Stock Number	This is the inventory name of the IG unit type for each line item record. The stock number is predetermined in the WinIG program. It references the inventory file maintained in the WinIG program. This number represents an insulated glass unit made of different glass types and special processes. Check with the vendor for the expected value. Uses Type Attribute = 0. Value written to file is returned from the Unit Number Attribute.
4	Float (required)	Width	This field represents the unit width to be made. The value must be in decimal form.



FeneVision® Machine Interface User Manual

			This is the width of the IG part in the BOM.
5	Float (required)	Height	This field represents the unit height to be made. The value must be in decimal form. This is the height of the IG part in the BOM.
6	Float	Overall Unit Thickness	This field will import the overall unit thickness for the stock number desired. The value must be in decimal form. The default is 7/8". It is recommended to space fill field. If a spacer stock is assigned to the unit, through field #7, then this value is calculated based on the glass thickness and spacer thickness, no matter what is passed in this field. This is the thickness of the IG part in the BOM.
7	String(10)	Spacer Stock	It is recommended that this field always be used. This is the inventory name of the spacer type, which is predetermined in the WinIG program. This field will over-ride the overall unit thickness and the default spacer setup for the unit stock number in the WinIG program. The default spacer stock in WinIG is an intercept spacer. Check with vendor for the expected value. Uses Type Attribute = 1. Value written to file is returned from the Unit Number Attribute.
8	String(10)	Gas Stock	This is the inventory name of the gas type, which is predetermined in the WinIG program. If this field is left blank, then no gas will be assigned to the unit. Check with vendor for the expected value. Uses Type Attribute = 2. Value written to file is returned from the Unit Number Attribute.
9	String(10)	Muntin Stock	This is the inventory name of the muntin type, which is predetermined in the WinIG program. If the field is left blank, then no muntins will be assigned to this unit. Check with vendor for the expected value. Uses Type Attribute = 3. Value written to file is returned from the Unit Number Attribute.
10	String(10)	Muntin Size and Type	This field is where the pattern of muntin and type of muntin are sent. The letter C translates to component(s) or bar(s), the letter P translates to pane(s) or viewing area, the word "CUSTOM" translates to a custom component configuration. For example, "3Vx2HC" translates to three vertical components and two horizontal components. The size "1Vx4HP" translates to one vertical pane and four horizontal panes. Usually, components indicated by the C at the end of the size are used for the colonial muntin pattern, while the diamond muntin pattern is measured in panes, indicated by a P at the end of size. The vertical number needs to precede the horizontal number. The word "CUSTOM" is component based with the notching locations defined in the custom



FeneVision® Machine Interface User Manual

			<p>muntin record. The custom muntin must immediately follow the line item record.</p> <p>Uses the system [Muntin] "Pattern" attribute:</p> <div style="border: 1px solid black; padding: 2px;"> <p>Pattern: <input style="width: 100px;" type="text" value="MP"/></p> </div> <p>Accepts standard pattern values such as "3Vx2H" or "3V2H". Assumes components if C or P is not specified. Any value greater than 5 characters is passed to file without any conversion.</p>
11	Float	Width Adjust	<p>This field adjusts the spacing of the muntins by the specified value. The muntin spacing can be calculated for a unit that is larger in width by the specified amount. A unit that is 20 inches wide with an adjustment of 1 inch will have muntins calculated for a 21-inch unit. This feature is used to space muntins the same for two different size units. The value must be in decimal form.</p> <p>Returns the value of the width adjust attribute.</p> <div style="border: 1px solid gray; padding: 5px;"> <p>Muntin</p> <p>Width Adjust <input style="width: 80px;" type="text" value="WA"/></p> <p>Height Adjust <input style="width: 80px;" type="text" value="HA"/></p> </div>
12	Float	Height Adjust	Same as above only for the height.
13	String(10)	Special Stock #1	<p>This is the inventory name of the special stock type, which is predetermined in the WinIG program. If this field is left blank, then no stock will be assigned to the unit. This is for any option that is NOT a spacer, gas, or muntin.</p> <p>Check with vendor for the meaning of special stock 1 through 3. This can be set through the type/unit attributes.</p>
14	String(10)	Special Stock #1	Same as above but for #2.
15	String(10)	Special Stock #1	Same as above but for #3.
16	String(40)	Line Comment	This is free form text used to describe the entire line item record. Only the first twenty characters will be printed on the labels or sent to the inkjet printer.
17	String(6)	Shape ID	<p>This is the shape identifier field. It indicates the shape of the unit. The default is rectangle. See the section on shape data for more details.</p> <div style="border: 1px solid gray; padding: 2px;"> <p>Shape ID: <input style="width: 100px;" type="text" value="SHAPE"/></p> </div>
18	Logical	Mirror Image	If true, the shape will be the mirror image of its normal orientation. On a trapezoid the tallest side is normally on the left with the top sloping down to the right. When the mirror image is true, the tallest side will be on the right with the top sloping down to the left.
19	Logical	Rounded Corners	If true, rounded corners will be used. The radius of the corners is specified by the Corner Radius field name.



FeneVision® Machine Interface User Manual

20	Float	Corner Radius	The radius dimension to be used by the Rounded Corners field name.
21	Float	Dimension A (required only if field 17 is used)	If dimension A-F is available for the shape. The dimensions A-F depend on the unit shape. The width and height are used from fields 4 and 5. See the section on shape data for more details. The value must be in decimal form.
22	“	“	“
23		Dimension F (required only if field 17 is used)	If dimension A-F is available, then a value must be sent. The dimensions A-F depend on the unit shape. The width and height are used from fields 4 and 5. See the section on shape data for more details. The value must be in decimal form.

There are 2 fields (Muntin Stock and Muntin Size and Type) in the file to hold grid information (from attached file):

9	String(10)	Muntin Stock	This is the inventory name of the muntin type, which is predetermined in the WinIG program. If the field is left blank, then no muntins will be assigned to this unit.
10	String(10)	Muntin Size and Type	This field is where the pattern of muntin and type of muntin are sent. The letter C translates to component(s) or bar(s), the letter P translates to pane(s) or viewing area, the word “CUSTOM” translates to a custom component configuration. For example, “3Vx2HC” translates to three vertical components and two horizontal components. The size “1Vx4HP” translates to one vertical pane and four horizontal panes. Usually, components indicated by the C at the end of the size are used for the colonial muntin pattern, while the diamond muntin pattern is measured in panes, indicated by a P at the end of size. The vertical number needs to precede the horizontal number. The word “CUSTOM” is component based with the notching locations defined in the custom muntin record. The custom muntin must immediately follow the line item record.

Troubleshooting

- Some older versions of the software had issues generating WinIG interface files from Purchasing Requirements. An FtWinIGImpExpGenerate error occurred when the Export Requirements button was pressed. A service pack or hotfix may be required.
- If the IG part appears in the interface file, but other parts like spacer and muntin are missing, the Sequence attribute on these parts is likely missing.
- If the notch attributes on the lock and keeper sash IG’s have different values due to a width or height but show the same notch locations in the WinIG file, the sequence attributes on each unit may have the same value (i.e., both having SEQ=1).
- If regenerating WinIG files after a reject, all WinIG parts need to be rejected for all the information to be included in the WinIG remake file.
 - For example, when rejecting the “IG” part, the “GAS” and “GRID” parts must also be rejected. This requires proper reject part type configuration.