

FeneTech, Inc.

FeneVision® Mobile Tracking User Manual



FeneVision® Mobile Tracking User Manual

v. 18.1

June 2023

FeneVision® is a registered trademark of FeneTech, Inc.

FeneTech, Inc.
32125 Solon Road, Suite #100
Solon, OH 44139
Phone 330-995-2830 • Fax 330-954-7008
www.fenetech.com

Table of Contents

- TABLE OF CONTENTS.....3**
- OVERVIEW4**
- USING MOBILE TRACKING4**
 - FENEVISION MOBILE TRACKING STEP BY STEP.....4
 - LOGGING IN.....4
 - STATION SELECTION5
 - SCANNING MODE.....6
 - Accept Mode*.....6
 - Reject Mode*.....7
 - Container Mode*.....10
 - Status Mode*.....16
 - Return Container Mode*17
 - Plant Location Mode*.....18
 - EXITING18
- SETUP18**
 - SYSTEM REQUIREMENTS18
 - INSTALLATION18
 - DISPLAY SETTINGS18
- HELP19**

Overview

FeneVision Mobile Tracking is a derivative application of FeneVision Tracking designed to be used on handheld barcode scanners with a small screen and even touchscreen capabilities. This application works as a Tracking station without the limitations of having to be tied to a FeneVision computer on the production floor. Using Mobile Tracking, the barcode scanner is capable of accepting units, completing units, rejecting units, containerizing units, returning units, and viewing the status of units.

Using Mobile Tracking

FeneVision Mobile Tracking Step by Step

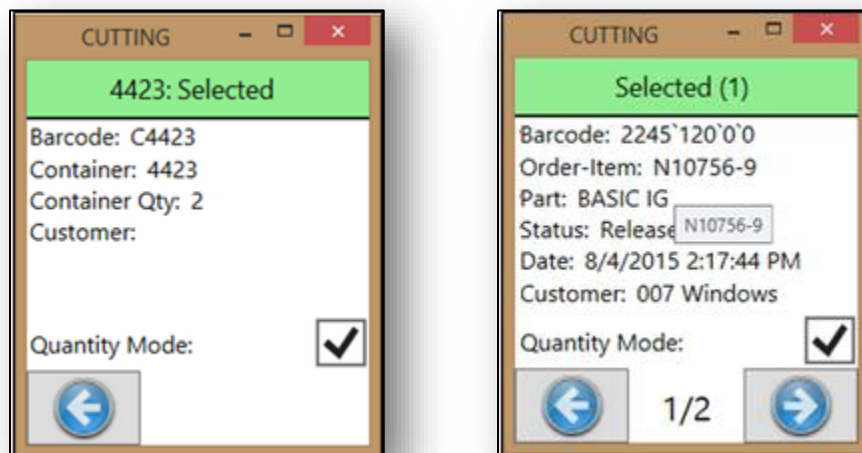
1. Create the user logging into Mobile Tracking in FeneVision Core.
2. Install the Tracking application on the terminal server which will also install Mobile Tracking.
3. Create a station on the terminal server that is configured for 'Mobile' tracking mode. At this point, all other necessary settings can be configured.

Note: The station selection screen for Mobile Tracking is based on the registry of the server. If a station must be accessed on the Mobile Tracking device, it must first be accessed through Tracking or Mobile Tracking on the server.

4. Access the Mobile Tracking application from the handheld scanner screen.
5. Select a station that is enabled for Mobile Tracking.
6. Enter login information if prompted.
7. Select the desired tracking mode from the following: 'Accept', 'Reject', 'Container', 'Status', or 'Return Container'. At this point, the user can also 'Sign Out'.
8. Begin scanning items. The result of each scan will depend on the mode that application is running in.

This application utilizes barcode scanner functionality. However, at any point manual scans can be entered when a barcode is unreadable, missing, etc. Selecting the 'm' key will allow users to manually enter barcodes formatted '<SCHED>' '<UNIT>' '<MASTER KEY>' '<PARENT KEY>' for units and '\$<CONTAINER ID>' for containers. Examples '1200'1'0'0' for units or '\$P01' for containers.

When an action takes place, the header will display the action text for 5 seconds before displaying the appropriate window header.



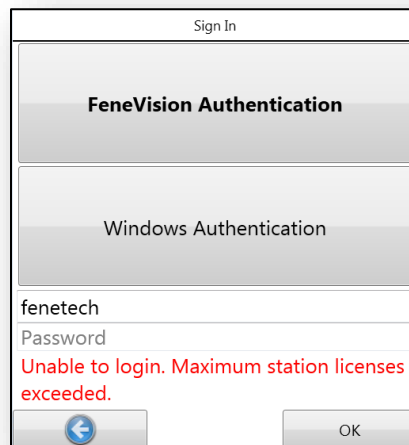
Note: The 'm' key will allow manual scanning by default, but this can be changed to a different key for any 'Mobile Tracking' station by modifying a parameter in the database. Manual scanning can be used when operating this application directly on the server, instead of using a scanner.

Logging In

If the station that is selected has 'Logon Required' enabled, the user will see a login screen. Enter the user's credentials, either FeneVision or Windows Authentication. This process can also be automated by scanning an employee barcode (employee barcodes are formatted as '#<EMPLOYEEID>' (e.g., '#15' where 15 is the employee's ID). A report containing employee barcodes can be printed from the "inventory issues" screen in FeneVision Core.



For users that have tracking and trucking stations by license, if the maximum number of licenses has been reached, the user will see the following message:

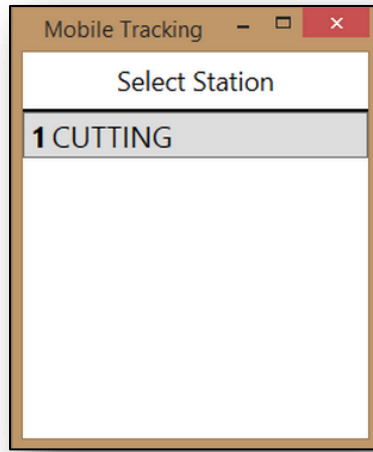


The user will not be able to open Mobile Tracking until another Tracking or Trucking station is closed, freeing up a license.

Station Selection

When first accessing the 'Mobile Tracking' application from the scanner, the stations screen will display. This screen allows the user to select which station will be scanning the units. Only stations that are setup as 'Mobile' tracking mode will display in this selection screen.

Note: The station selection screen for Mobile Tracking is based on the registry of the server. If a station must be accessed on the Mobile Tracking device, it must first be accessed through Tracking or Mobile Tracking on the server.

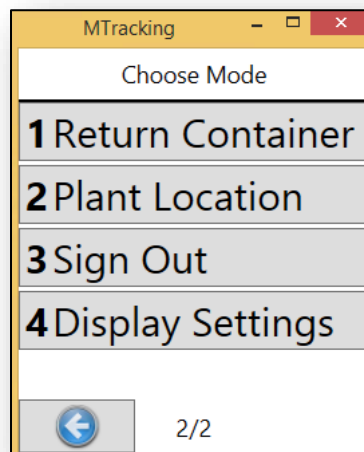
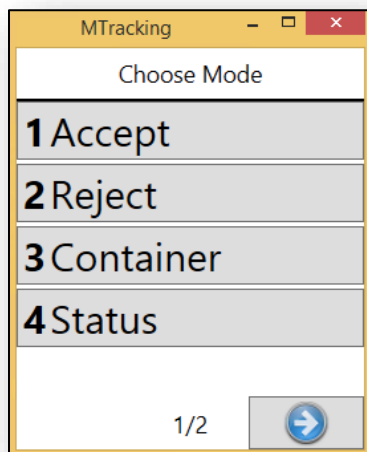


Scanning Mode

Select the mode in which the scanner should be used. Choose from the following options:

- **Accept**
- **Reject**
- **Container**
- **Status**
- **Return Container**
- **Plant Location**
- **Sign Out**
- **Display Settings**

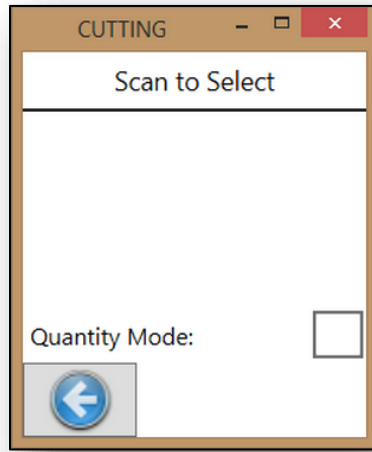
By default, all options are visible but can be hidden during system configuration. Data must be manipulated in the StationLookupParameters database table by authorized personnel in order to hide modes.



Accept Mode

'Accept Mode' is used to status units as either accepted or complete (if the 'Mark Complete' option is enabled). This screen pays attention to the setting 'Updating Mode' in Tracking settings. The updating mode will either be 'Ordered Part Updating' or 'Part Updating'. If 'Ordered Part Updating' is selected, every scan is treated as an ordered part. If 'Part Updating' is selected, there is an additional setting that becomes visible, 'Allow Ordered Part Scan'. If not enabled, ordered part barcodes will result in invalid barcode message.

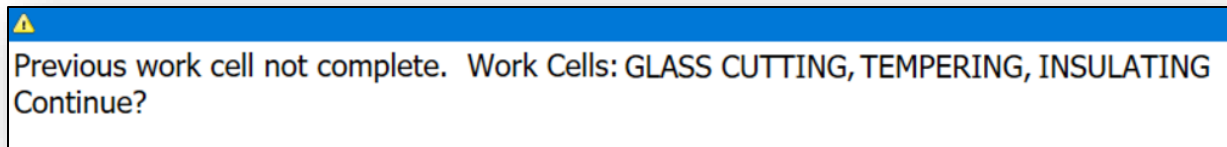
Once the 'Accept Mode' is selected the following screen will show:



The header of this screen will indicate to the user how to proceed. In the screenshot above the header reads 'Scan to Select' because 'Accept On First Scan' is not enabled so the unit requires two scans to be accepted. After the first scan selects the unit, the header will read 'Scan to Accept' (the header will begin with this message when 'Accept On First Scan' is enabled). If 'Mark Complete' is enabled, the header will read 'Scan to Complete' instead of 'Scan to Accept'. After the unit is scanned, details about the scanned unit will display on the screen.

If 'Quantity Mode' is checked, there will be a prompt requesting a quantity to accept or complete. This quantity will default to the value selected for the 'Quantity Prompt Default' setting.

If a unit has been scanned out of sequence order, as sequenced by capacity plans, the user will see a message that identifies the work cells that were skipped.



If the user does not want to proceed with the action taken, select 'No'. The user will be returned to the 'Scan' screen.

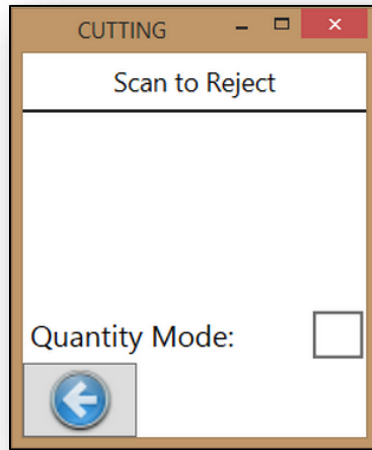
If the user wants to continue with the action regardless of the plan alert, select 'Yes'. When a user selects 'yes', one of two actions will occur:

1. If Login Required is enabled for the station, the application will continue with the action if the user has sufficient permissions.
2. If Login Required is disabled for the station, the application will continue with the action and the action will be logged with 'Mobile Tracking' as the employee that approved the transaction in the FeneVision BI Unit Detail report.

Reject Mode

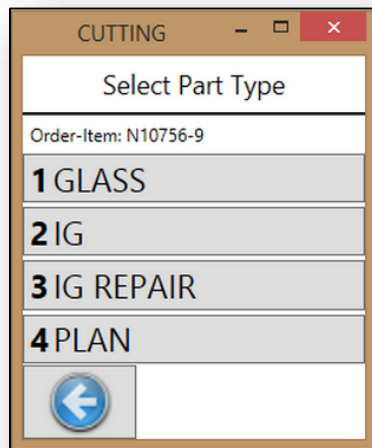
'Reject Mode' allows users to scan units as rejected. Much like the Tracking application, 'Mobile Tracking' allows users to reject units while requiring reject part types, reject codes and reject reprocessing.

Once the 'Reject Mode' is selected the following screen will show:



The header of this screen will indicate to the user how to proceed. To reject a unit, the user will follow these steps:

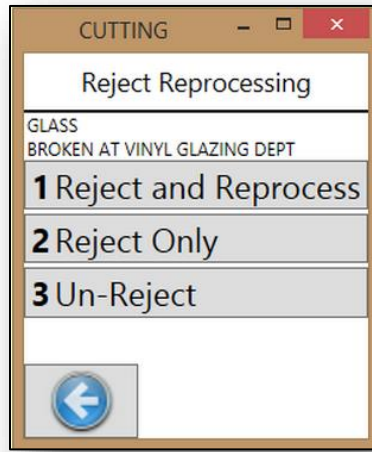
1. Scan the unit to be rejected.
2. Select a reject part type (this can be configured in reject setup found in Core).



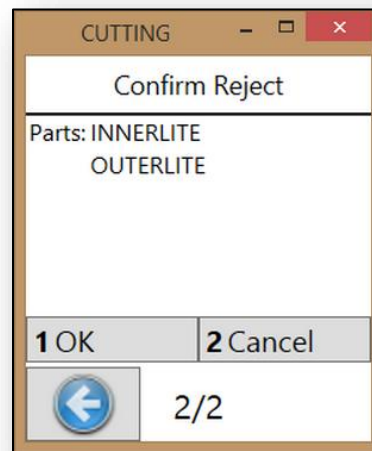
3. Select a reject code.



4. Select a reject processing method: 'Reject and Reprocess', 'Reject Only' or 'Un-Reject'.

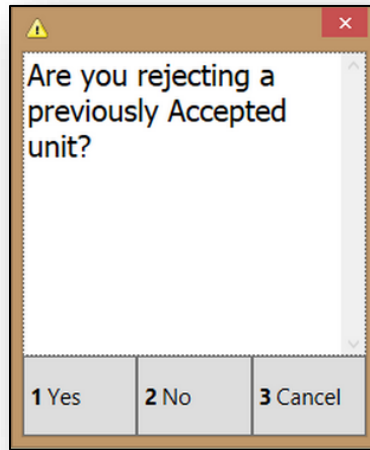


5. Confirm the reject information. Once confirmed, the reject process will be carried out.



Note: At any point, previous selections throughout the process can be re-accessed by using the back arrows.

Quantity mode can be enabled in 'Reject Mode'. However, when the 'Quantity Mode' is checked, a user cannot reject units from multiple line items at once. 'Quantity Mode' allows the user to scan any barcode within an order-item's unit range. This means that only units under a single line item can be rejected at once. If both accepted and non-accepted units exist in that range the following screen will display:

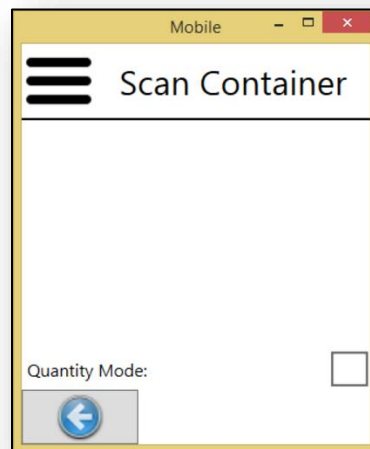


If 'Yes' is chosen, then the maximum unit ID for that Order-Item that has been accepted will be rejected. If 'No' is chosen, the maximum unit ID for that Order-item that has not yet been accepted will be rejected. If Cancel is chosen, the reject is aborted.

For example, a single line item consists of units 1-5 and 1, 2 and 3 have already been accepted. The user rejects a quantity of 2. If 'Yes' is selected, units 2 and 3 will be rejected. If 'No' is selected, units 4 & 5 will be rejected.

Container Mode

In 'Container Mode', users can create new containers, open containers as well as scan units into and out of containers. Items can also be scanned to transfer units from one container to another.

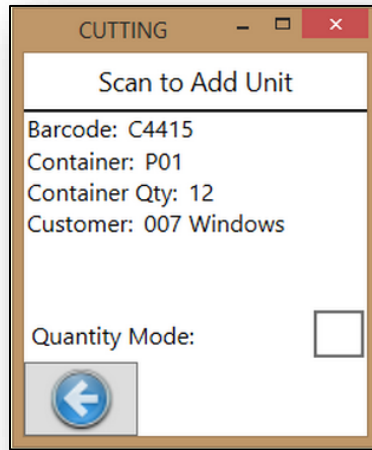


A container can be selected by scanning the container barcode or by scanning a unit associated with a valid container. Once a unit or container is scanned the container's information will appear on the application as seen below.

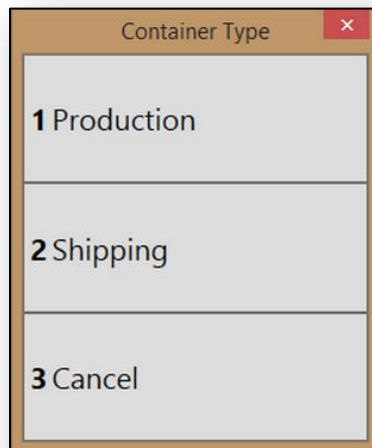
Note: In the event that the user does not have a container barcode, or a container with a unit in it already, they may manually select a container using the container ID or container key. By default, the 'M' key will allow the user to manually enter the container ID (prefixed with '\$') or the container key (prefixed with 'C'). The hotkey can be modified by a FeneVision technician.

The header of this screen will indicate to the user how to proceed. To scan a unit into and/or out of a container, complete the following steps:

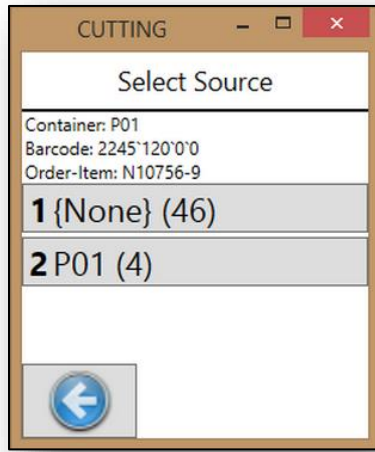
1. To open a container, the user will scan the barcode of the container.



A window will display with the container information. If the container is defined as both production and shipping has a status of 'Returned' and 'Prompt For Production/Shipping' is enabled, then a window will first display that allows the user to specify the container type.

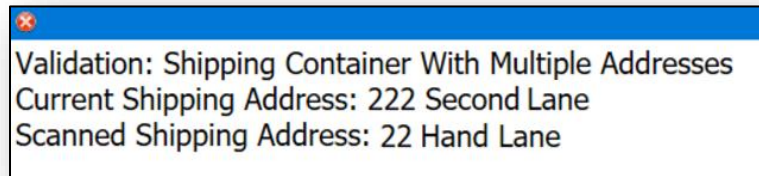


2. Perform one of the following:
 - a. Scan a different container - Scanning another container will open the new container and allow the user to manipulate the new container.
 - b. Scan a unit to add to the container - The unit will be placed into the open container. If the unit is already in the open container, the unit will be removed from that container. Whether or not the user is prompted during this action is a setting in the FeneVision Tracking application.
3. If 'Quantity Mode' is enabled and a unit is scanned, an 'Enter Quantity' screen displays. This value will default to the value selected in the 'Quantity Prompt Default' setting. If 'Remaining Qty' is not set for 'Quantity Prompt Default' and a unit is scanned that has quantity in separate containers and/or has units not yet containerized, a 'Select Source' dialog will display. This dialog will ask users to specify where the units that will be scanned into the open container originated.

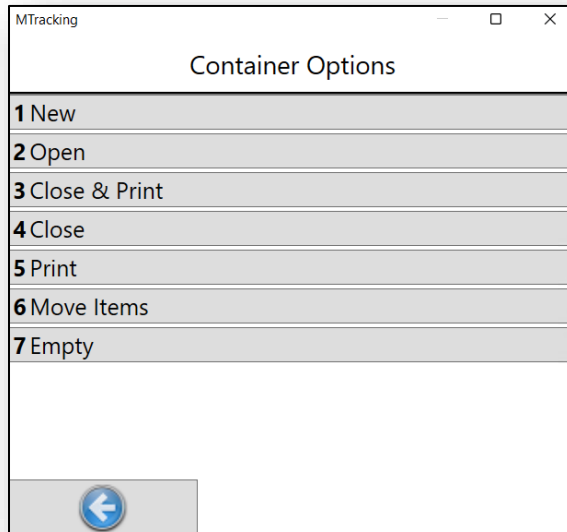


If 'Quantity Mode' was enabled and a 'Qty' is entered, selecting 'OK' or another successful scan of the unit will load those units into the open container.

If a unit is scanned into a container and the shipping address on the unit does not match the address on the shipping container, as in the units are being shipped to the same customer but with different shipping addresses, a validation message will display indicated the difference in addresses. This validation is controlled by a policy within Core called 'Shipping Containers With Multiple Addresses'. When this policy is set to 'Block', the user will not be able to add units with different addresses to the container. When the policy is set to 'Info', the user will be able to add units with different addresses to the container.



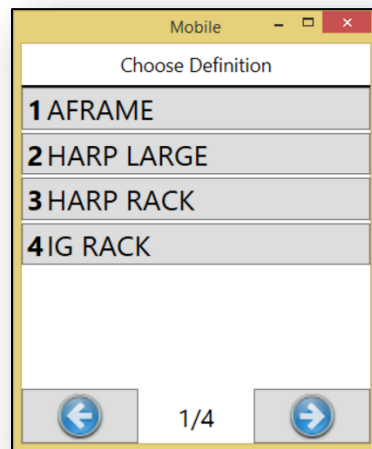
Within 'Container Mode' users will have access to other container functions by selecting the menu icon in the top left corner. Doing so will show the below screen.



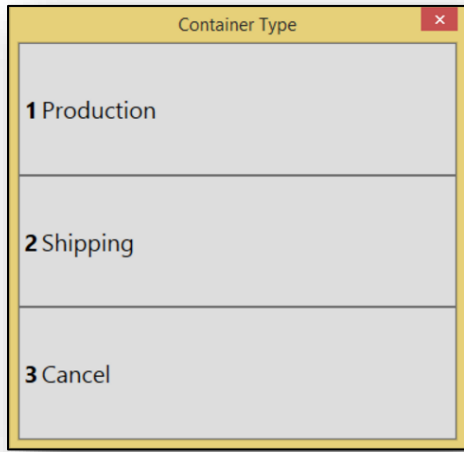
- **New** – Allows the user to create ‘On-the fly’ containers for container definitions that have ‘Allow New’ selected within FeneVision Core Container Setup.

The following actions will occur after selecting ‘New’:

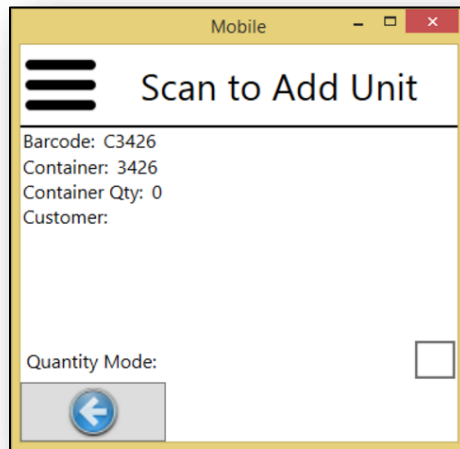
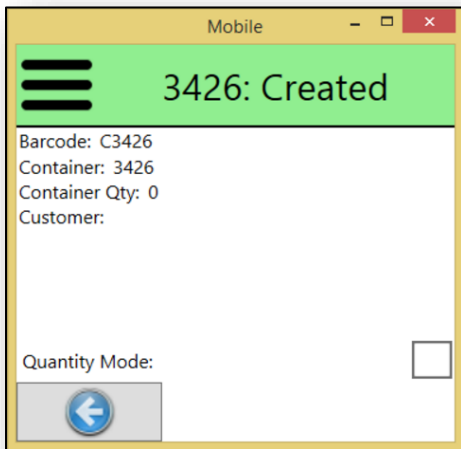
- a. The user will be prompted to select a container definition that has ‘Allow New’ selected in FeneVision Core.



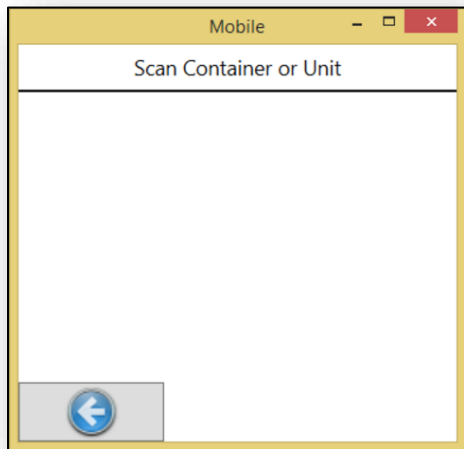
- b. If the container definition selected is marked as both ‘Production’ and ‘Shipping’, a screen will appear for the user to specify the type of container to be created.



- c. The container will then be created and allow the user to begin scanning units into the newly created container.

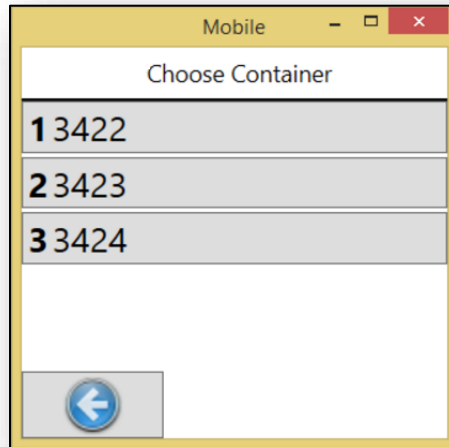


- **Open** – Allows the user to scan a container barcode to open a container and allow scanned units to be placed onto the selected container. This option also allows the user to scan a unit and the container associated with that unit will be opened.



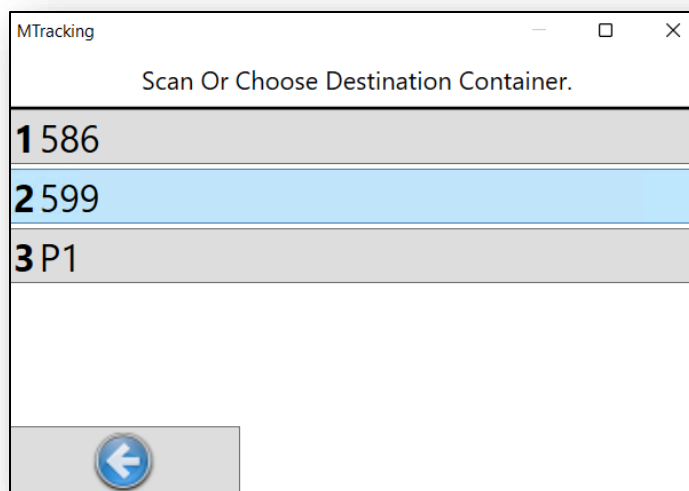
If the user scans a unit that is not on a container, the user will be informed, and the application will remain on this screen. Only scanning a valid container or unit associated with a container will progress the application.

If the user scans a non-manufactured part associated with multiple containers, the following screen will display to specify the container desired.



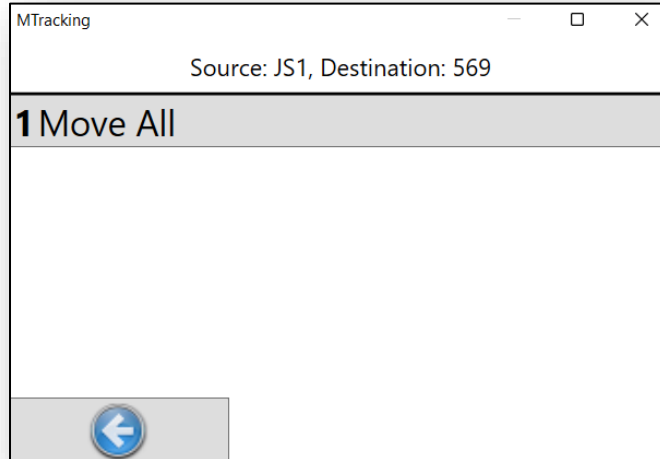
- **Close & Print** – Closes the current container and prints the necessary container reports. Reports to print are set up within the FeneVision Tracking application on the host PC. Please reference the FeneVision Tracking manual to configure these reports.
- **Close** – Closes the current container and returns the application to the 'Scan Container' screen.
- **Print** – Prints the necessary container reports for the current container and returns the application to the 'Scan Container' screen. Reports to print are set up within the FeneVision Tracking application on the host PC. Please reference the FeneVision Tracking manual to configure these reports.
- **Move Items** – Allows the user to transfer items from the current container to a different container.

When the Move Items option is selected a new screen opens giving the user the option to Scan or Choose an open container where the items in the current container are going to be transferred to.



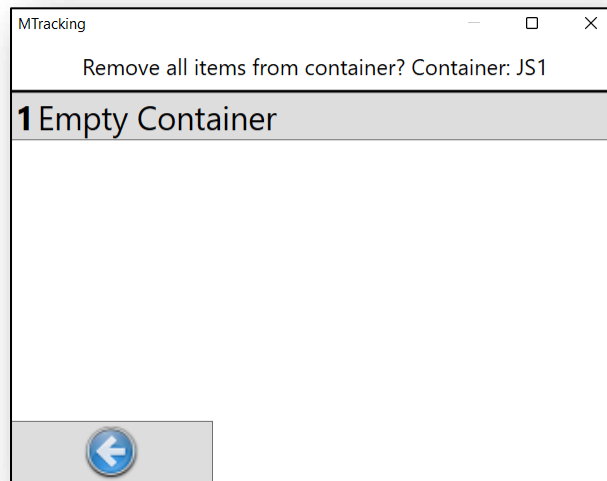
Once a container is selected the next screen will inform the users what container is the source container and what container has been selected as the destination container. This screen also allows the user to select the Move All option. This will transfer all the contents of the source container to the destination container. In the event that the destination container is a

harp rack with not enough empty slots to accommodate all the items from the source container, a prompt will occur informing the user that the destination container does not have enough empty slots and the transfer will be cancelled.



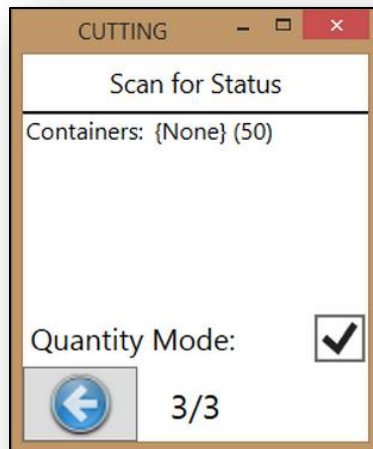
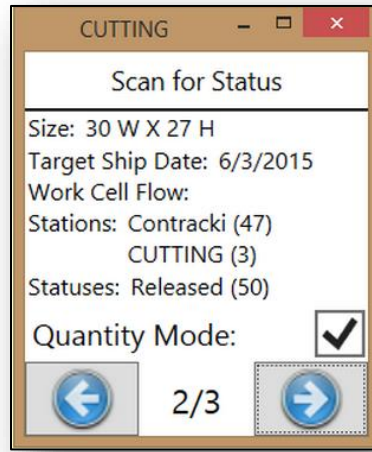
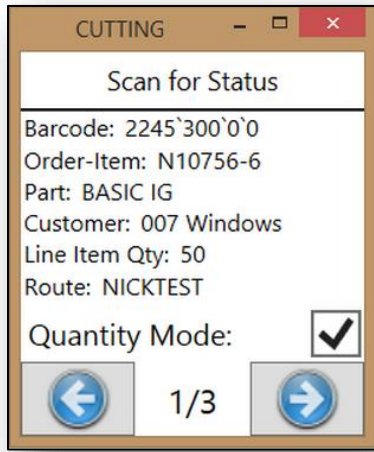
- **Empty** – Allows the user to remove the contents of the currently selected container.

When selecting the Empty option the user is shown the currently selected container and given the option to Select Empty Container. Selecting Empty Container will remove all the items from the currently selected container.



Status Mode

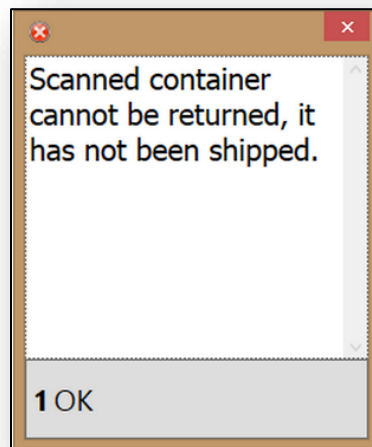
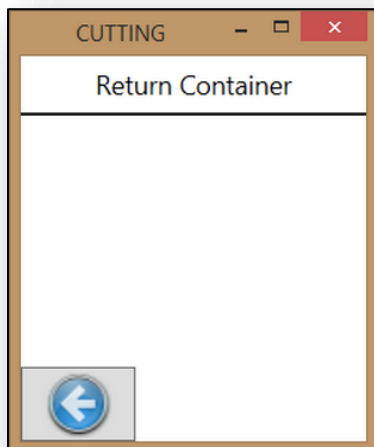
'Status Mode' scanning allows the user to access status data of scanned units or containers.



Note: Information may differ based on whether 'Quantity Mode' is enabled or disabled.

Return Container Mode

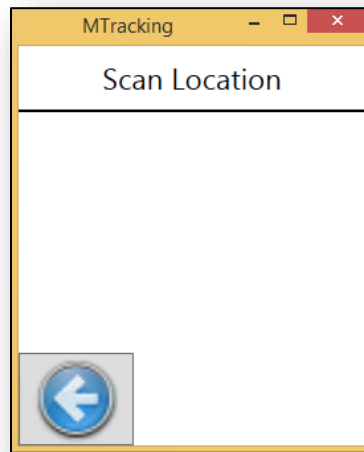
'Return Container Mode' allows users to scan containers that have been marked shipped. If a container is scanned that has not been shipped, the user will receive the following message.



Plant Location Mode

'Plant Location Mode' is used to assign units to plant locations. In this mode the unit does not receive an 'Accept' scan it is simply assigned to a plant location.

Once the 'Plant Location Mode' is selected the following screen will show:



The header of this screen will indicate to the user how to proceed. In the screenshot above the header reads 'Scan Location'. After a plant location is scanned, the header will read 'Scan to Add Unit'. After the unit is scanned, details about the scanned unit will display on the screen.

Exiting

Once a user is finished scanning units, close the application by selecting the red 'X' in the top right corner or navigate back to the beginning screen where the 'Sign Out' option exists.

Setup

Setup for this application is done in FeneVision Tracking with the Mobile Tracking stations selected. See the FeneVision Tracking manual for detailed information regarding the settings screen.

System Requirements

In order to successfully run FeneVision Mobile Tracking, the user must use a Microsoft Windows CE barcode scanner with a small screen and network access. A terminal server must be utilized when running the application. The scanner will run the mobile tracking application through the terminal server.

Note: Reference FeneVision Hardware and Software Requirements documentation for the latest hardware minimum requirements.

Installation

FeneVision Mobile Tracking should be installed on a terminal server with remote access. FeneVision Mobile Tracking is installed as part of the FeneVision Tracking installation. Once the application is installed on the terminal server, a remote access application should be installed on the scanner to access the application on the server.

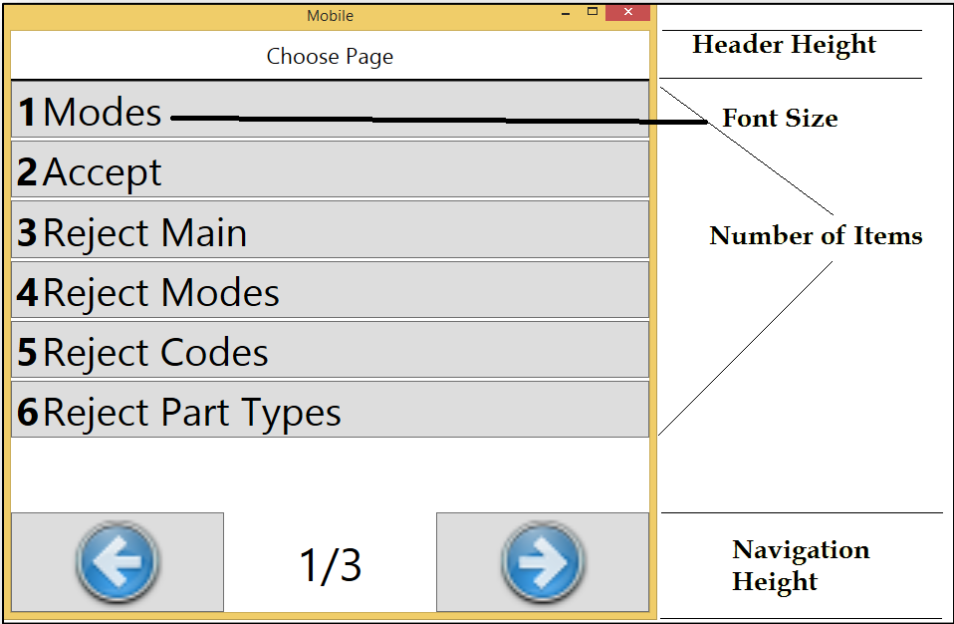
Display Settings

'Display Settings' is used to change the way text is displayed in the various modes. Each screen in Mobile Tracking can be customized.

The following 'Display Settings' can be configured for each screen in Mobile Tracking

- **Header Height** – Numeric value that determines the size of the header.
- **Items Font** – Numeric value that determines the size of the text displayed on the screen.

- **Number of Items** – Numeric value that determines how many items can be displayed on one page.
- **Navigation Height** – Numeric value that determines the size of the arrow buttons in the menu.
- **Window Size** – Numeric read-only value that displays the dimensions of the Mobile Tracking screen.



Help

Users can access the most up-to-date user manuals from the FeneVision Core, Tracking, or Trucking applications. See the FeneVision Core user manual for additional steps to access the full user manual directory.