



Cyncly

FeneVision® Best Practice

Setting up Generic Text Printer for ZPL Previewing (BP0136)

Revision	Date	Description of Change	Revised By
A	08/20/2018	Initial Document	MEF

Introduction

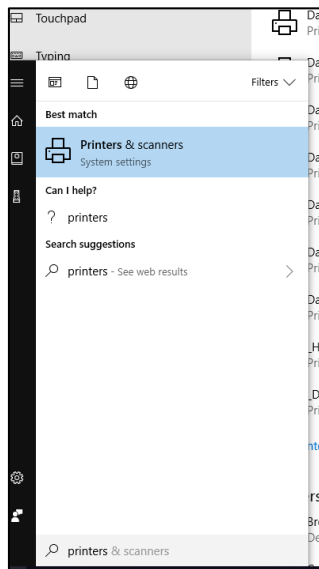
The purpose of this document is to set up a customer's server to preview ZPL/label code without having the customer to print the labels every time the engineer needs to test.

Using

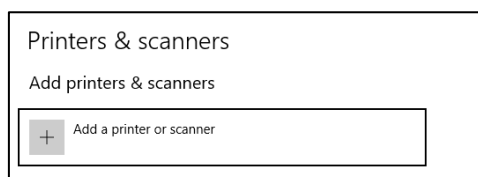
The document will outline the steps to setting up a General Text File printer to print the ZPL code that can be pasted into a ZPL code viewer.

Setting up the General Text File Printer

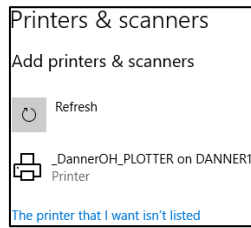
1. In the Windows search bar, search for "Printers & Scanners"



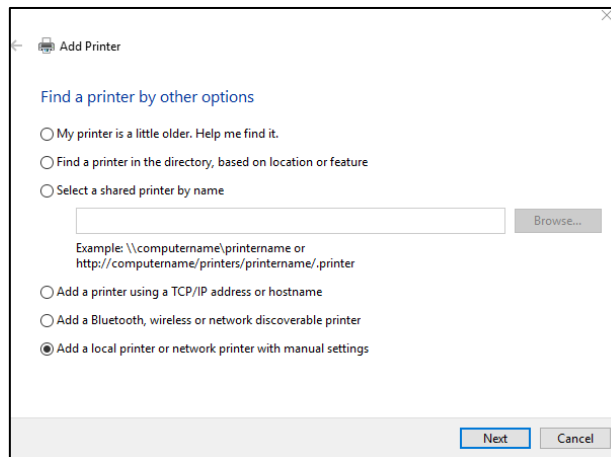
2. At the top of the screen, click the "Add printer or Scanner" button



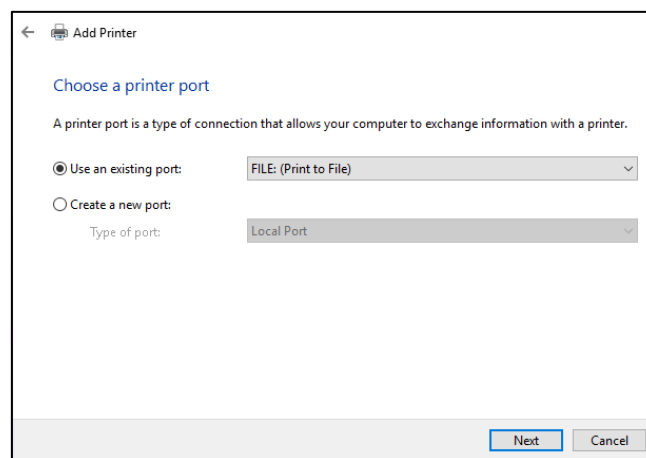
- At the bottom of the list, click “The printer that I want isn’t listed” link.



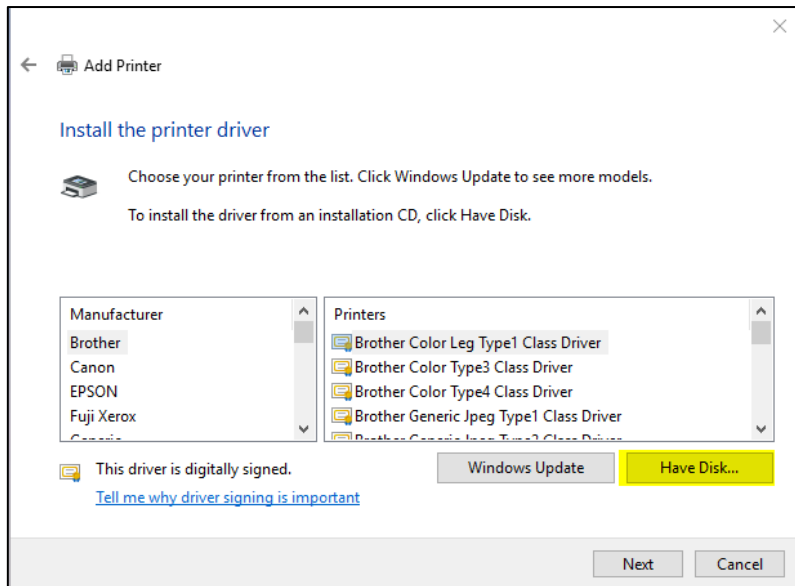
- Choose, “Add a local printer or network printer with manual settings”, and click, “Next”.



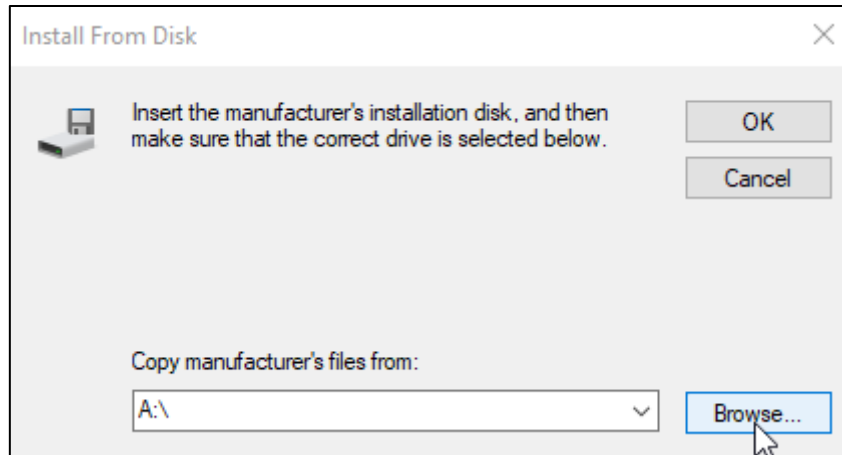
- Choose, “Use an existing port:”, and choose the, “FILE: (Print to File)”, port type.



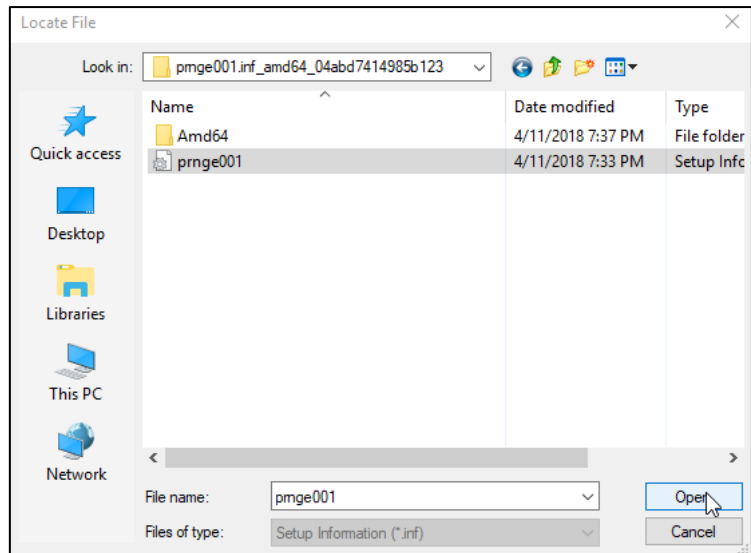
- The next screen will ask you to choose/install a driver. The window should ask you if you want to use the recommended driver. If this is the case, select “Next” and go to step 7. If this is not the case and is asking you to pick a driver (such as the screen shot below), then click on, “Have Disk...”



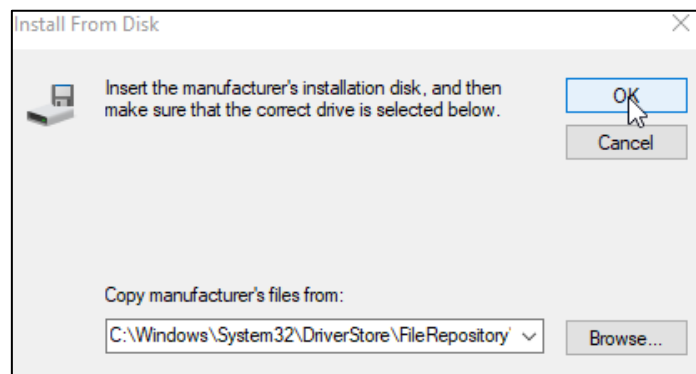
- a. Click "Browse..."



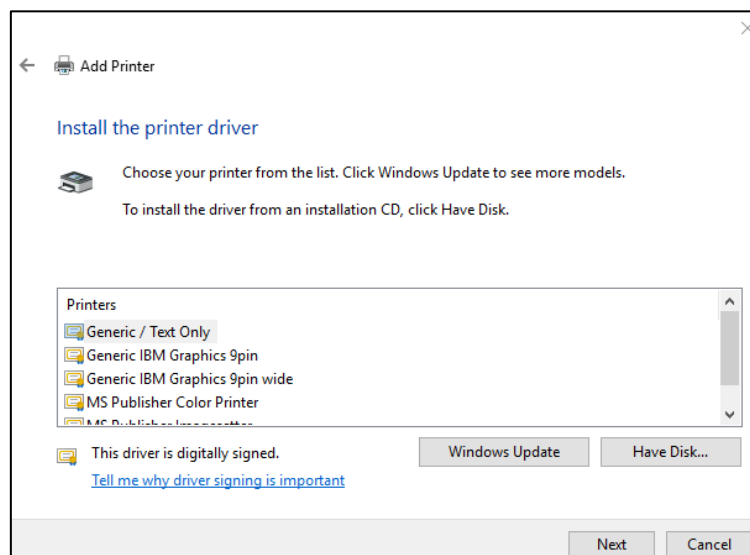
- b. Navigate to %SYSTEMROOT%\system32\DriverStore\FileRepository file path (the system should automatically put you in the, "system32", file folder.
- c. Search for the folder with the starting title of "prnge001.inf...". Open that folder and use the prnge001 Setup Information file. Click open.



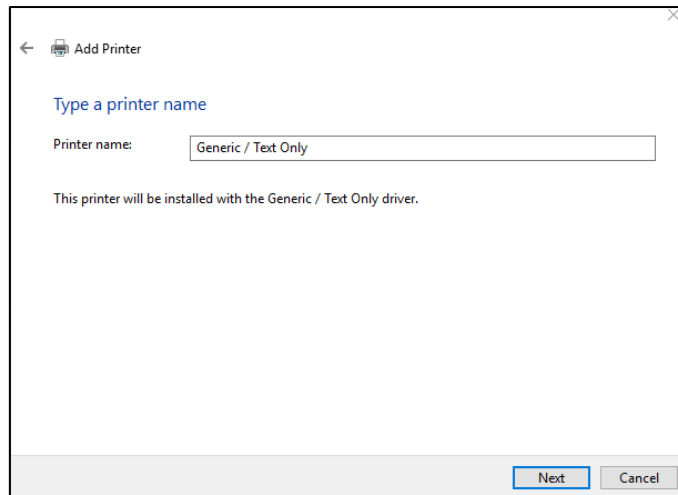
d. Click, "OK".



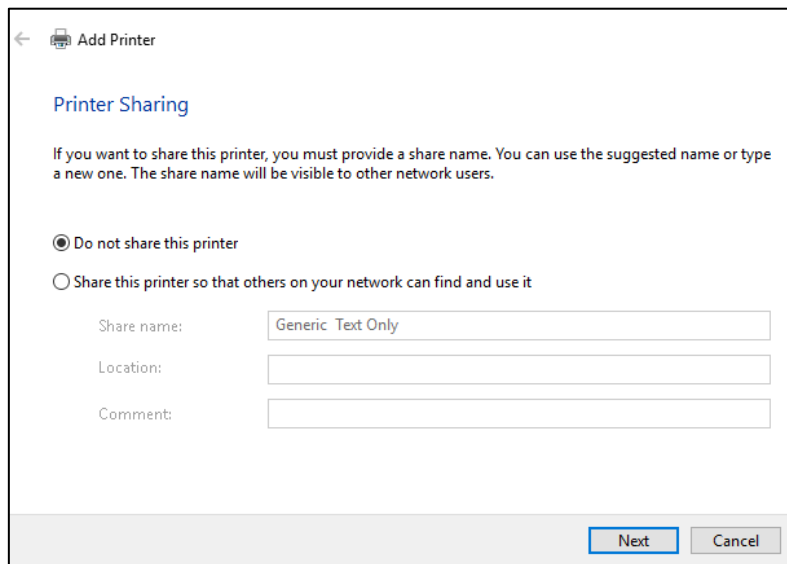
7. Select, "Generic / Text Only", as the printer type and click, "Next".



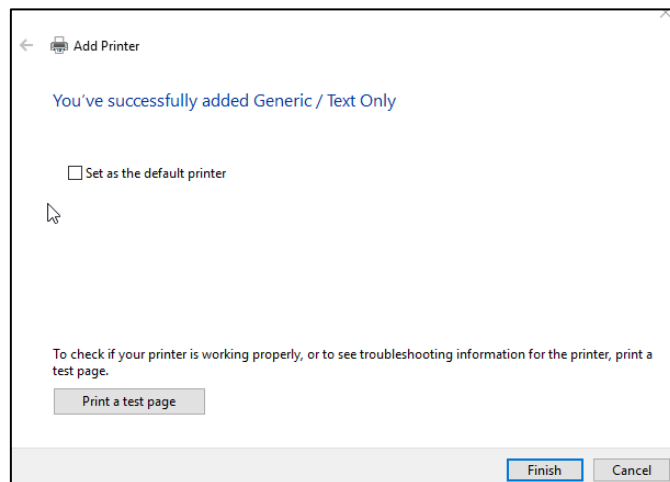
8. Enter the name of your printer. This can be anything you like. I will leave it as "Generic / Text Only" for this example. Once you are finished selecting a name, click "Next".



9. Select, "Do not share this printer", since this will be set up as a local printer. Click, "Next".

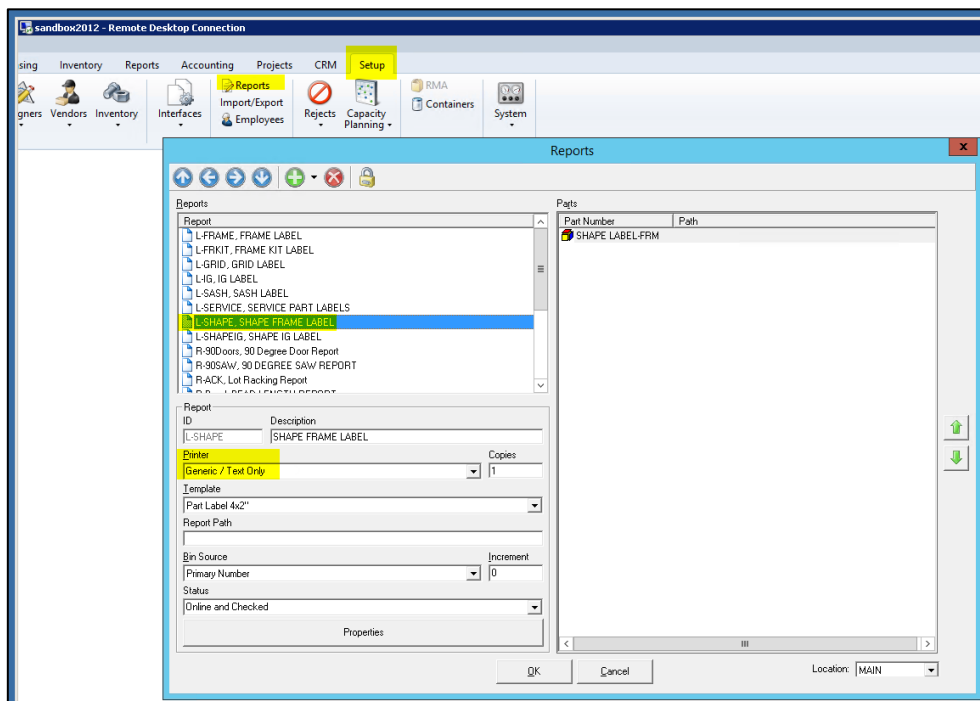


10. Uncheck, "Set as the default printer", and click, "Finish".

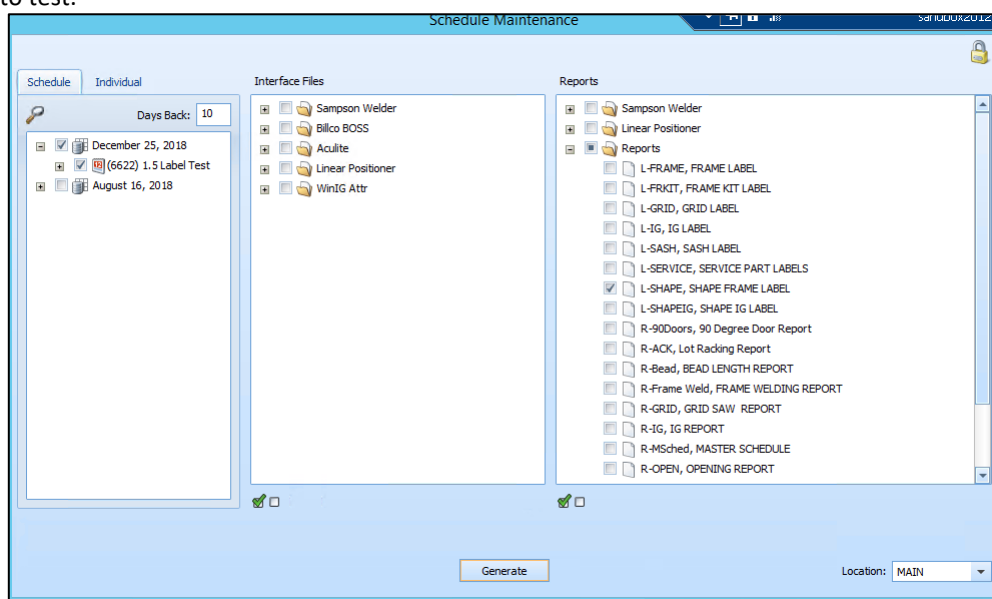


Generating and Previewing the File

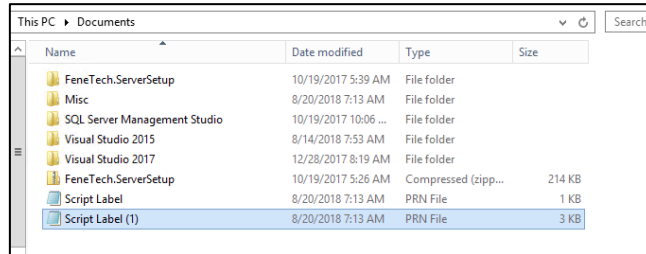
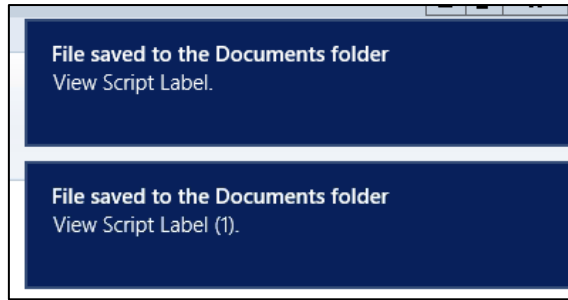
1. Open CORE as an Administrator.
2. Go to Setup > Reports and locate the label that you are trying to preview. Change the printer to your new Generic Text printer. Click, "OK", to exit the screen and save changes.



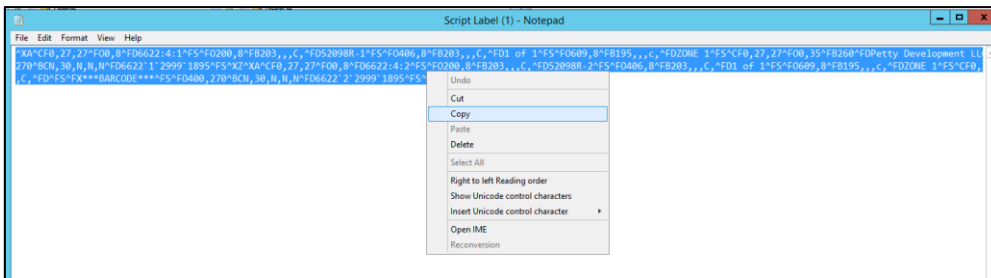
3. Open, "Schedule Maintenance". Select the schedule you want to generate the label for as well as the label you want to test.



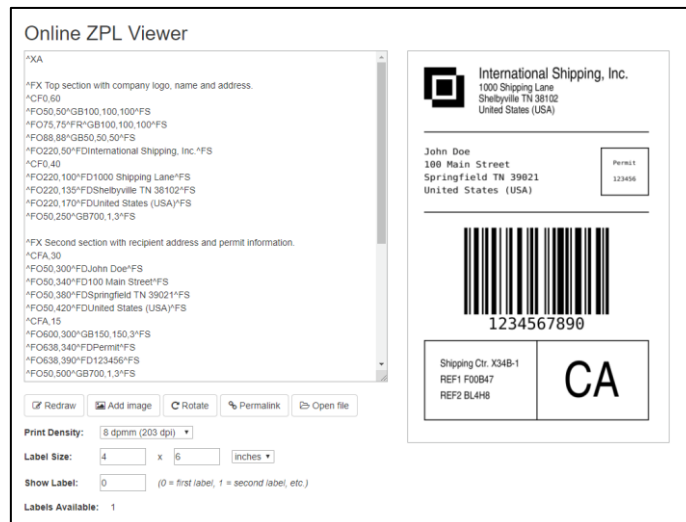
4. At the bottom of the screen, click the, "Generate", button.
 - a. Depending on the version of Windows/Server you are on, it will tell you where it saves the files in the upper right corner. If not, the files will be located in the Documents Folder titled, "Script Label".
 - b. There may be multiple files generated (separate files get created for the images). All of those will need copied over.



5. Open the document. If it asks you to select which application to open it with, choose Notepad.
 - a. Note: If you get a spaces between all the characters, open in notepad++ instead.
6. Select all the text and copy it.



7. Open your internet browser. Go to the online ZPL Viewer located at: <http://labelary.com/viewer.html>



8. Highlight and delete the ZPL code on the left. Paste the copied code from your file into the text box and click, "Redraw". Note: You may need to configure the label size and dpi to properly display the label.
 - a. Note: Multiple files may need to be copied over (there are separate files generated for the images). The image text should be above the text of the other files. (The files get saved in the order they need to be copied over)

Online ZPL Viewer

```

,R,^FD45^FS^FO0,185^FB800^FD^FS^FO200,185^FB203,,C,^FD^FS^FO406,185^
FB203,,C,^FD^FS^FO609,185^FB190,,R,^FD^FS^FO0,215^FB800^FD^FS^FO406,
215^FB203,,C,^FDCOL^FS^FO609,215^FB190,,R,^FD4Hx2Vp^FS^FO0,245^FB20
3^FD^FS^FO200,245^FB203,,C,^FD^FS^FO406,245^FB800^FD^FS^FO609,245^F
B800^FD^FS^CF0,30,30^FO5,270^GB185,30,30^FS^FO0,270^FR^AC^FDSHAPE^F
S^CF0,20,20^FO600,95^FB101,,C,^FDWHT^FS^FO700,95^FB102,,C,^FDEX^FS^F
O200,215^FB100,,C,^FD^FS^FO300,215^FB100,,C,^FDGRW^FS^FX***BARCODE
****^FS^FO400,270^BCN,30,N,N,^FD6622'1'2999'1895^FS^XZ^XA^CF0,27,27^FO
0,8^FD6622.4:2^FS^FO200,8^FB203,,C,^FD52098R-
2^FS^FO406,8^FB203,,C,^FD1 of 1^FS^FO609,8^FB195,,C,^FDZONE
1^FS^CF0,27,27^FO0,35^FB260^FDPetty Development
LLC^FS^FO400,35^FB190,,R,^FD^FS^FO0,65^FB400^FD^FS^FO400,65^FB395,,R
,^FDtest1234^FS^FO0,95^FB800^FD10HR-FRM^FS^FO200,95^FB203,,C,^FD47.5
W X 23.75
H^FS^FO0,125^FB800^FD138FN^FS^FO200,125^FB203,,C,^FD^FS^FO406,125^F
B203,,C,^FD^FS^FO609,125^FB190,,R,^FD^FS^FO0,155^FB800^FD23.75^FS^FO
200,155^FB203,,C,^FD159.15^FS^FO406,155^FB203,,C,^FD0^FS^FO609,155^FB
190,,R,^FD45^FS^FO0,185^FB800^FD^FS^FO200,185^FB203,,C,^FD^FS^FO406,
185^FB203,,C,^FD^FS^FO609,185^FB190,,R,^FD^FS^FO0,215^FB800^FD^FS^FO
406,215^FB203,,C,^FD^FS^FO609,215^FB190,,R,^FD^FS^FO0,245^FB203^FD^F
S^FO200,245^FB203,,C,^FD^FS^FO406,245^FB800^FD^FS^FO609,245^FB800^F
D^FS^CF0,30,30^FO5,270^GB185,30,30^FS^FO0,270^FR^AC^FDSHAPE^FS^CF0,
20,20^FO600,95^FB101,,C,^FDWHT^FS^FO700,95^FB102,,C,^FDRO^FS^FO200,
215^FB100,,C,^FD^FS^FO300,215^FB100,,C,^FD^FS^FX***BARCODE****^FS^FO4
00,270^BCN,30,N,N,^FD6622'2'2999'1895^FS^XZ
    
```

Redraw
 Add image
 Rotate
 Permalink
 Open file

Print Density: 6 dpmm (152 dpi)

Label Size: 4 x 6 inches

Show Label: 0 (0 = first label, 1 = second label, etc.)

Labels Available: 2

Online ZPL Viewer

```

^XA^CF0,27,27^FO0,8^FD6622.4:1^FS^FO200,8^FB203,,C,^FD52098R-
1^FS^FO406,8^FB203,,C,^FD1 of 1^FS^FO609,8^FB195,,C,^FDZONE
1^FS^CF0,27,27^FO0,35^FB260^FDPetty Development
LLC^FS^FO400,35^FB190,,R,^FD^FS^FO0,65^FB400^FD^FS^FO400,65^FB395,,R
,^FDtest1234^FS^FO0,95^FB800^FD10HR-FRM^FS^FO200,95^FB203,,C,^FD48
W X 24
H^FS^FO0,125^FB800^FD138FN^FS^FO200,125^FB203,,C,^FD^FS^FO406,125^F
B203,,C,^FD^FS^FO609,125^FB190,,R,^FD^FS^FO0,155^FB800^FD24^FS^FO200
,155^FB203,,C,^FD160.72^FS^FO406,155^FB203,,C,^FD0^FS^FO609,155^FB190,
,R,^FD45^FS^FO0,185^FB800^FD^FS^FO200,185^FB203,,C,^FD^FS^FO406,185^
FB203,,C,^FD^FS^FO609,185^FB190,,R,^FD^FS^FO0,215^FB800^FD^FS^FO406,
215^FB203,,C,^FDCOL^FS^FO609,215^FB190,,R,^FD4Hx2Vp^FS^FO0,245^FB20
3^FD^FS^FO200,245^FB203,,C,^FD^FS^FO406,245^FB800^FD^FS^FO609,245^F
B800^FD^FS^CF0,30,30^FO5,270^GB185,30,30^FS^FO0,270^FR^AC^FDSHAPE^F
S^CF0,20,20^FO600,95^FB101,,C,^FDWHT^FS^FO700,95^FB102,,C,^FDEX^FS^F
O200,215^FB100,,C,^FD^FS^FO300,215^FB100,,C,^FDGRW^FS^FX***BARCODE
****^FS^FO400,270^BCN,30,N,N,^FD6622'1'2999'1895^FS^XZ^XA^CF0,27,27^FO
0,8^FD6622.4:2^FS^FO200,8^FB203,,C,^FD52098R-
2^FS^FO406,8^FB203,,C,^FD1 of 1^FS^FO609,8^FB195,,C,^FDZONE
1^FS^CF0,27,27^FO0,35^FB260^FDPetty Development
LLC^FS^FO400,35^FB190,,R,^FD^FS^FO0,65^FB400^FD^FS^FO400,65^FB395,,R
,^FDtest1234^FS^FO0,95^FB800^FD10HR-FRM^FS^FO200,95^FB203,,C,^FD47.5
W X 23.75
H^FS^FO0,125^FB800^FD138FN^FS^FO200,125^FB203,,C,^FD^FS^FO406,125^F
B203,,C,^FD^FS^FO609,125^FB190,,R,^FD^FS^FO0,155^FB800^FD23.75^FS^FO
    
```

6622:4:1	52098R-1	1 of 1	ZONE 1
Development LLC			test1234
10HR-FRM	48 W X 24 H		EX
138FN			
24	160.72	0	45
	grw	COL	4Hx2Vp



Redraw
 Add image
 Rotate
 Permalink
 Open file

Print Density: 8 dpmm (203 dpi)

Label Size: 4 x 1.5 inches

Show Label: 0 (0 = first label, 1 = second label, etc.)

Labels Available: 2